



Equity Arc National Convening & Festival Ensembles

May 1-3, 2026 / Tysons, VA



Table of Contents

- 3 Letter from Equity Arc
- 4 Equity Arc Festival Ensembles
- 6 Equity Arc Festival Ensembles by the Numbers
- 8 Faculty
- 9 Faculty by the Numbers
- 10 Equity Arc National Convening by the Numbers
- 11 Keynote Speakers
- 14 College and Summer Study Fair
- 15 Parent Engagement
- 17 Breakout Conversations
- 19 Implications for Equity Arc
- 20 Equity Arc Festival Ensembles Music Directors
- 21 Equity Arc Roster of Faculty
- 23 Equity Arc Roster of Fellows
- 28 Senior Update
- 32 Equity Arc Leadership



PAUL M. ANGELL
FAMILY FOUNDATION



We are grateful to the Paul M. Angell Family Foundation, the Country Music Association Foundation, The Music Man Foundation, The Volgenau Foundation, the Arts, Equity, & Education Fund, and the Jason Mraz Foundation for their support of Equity Arc and sponsorship of the National Convening and Festival Ensembles.

Photography by Melissa Taylor and Paul Babcock

Letter from Equity Arc

The 2026 National Convening and Festival Ensembles marked an important milestone for Equity Arc.

Over the past five years, we have worked alongside young musicians and the broader classical music community to create opportunities, build relationships, and expand pathways into the field. Through our programs and collaborations, we have developed a deeper understanding of what is needed for musicians to translate potential into progress. This year's convening was an opportunity to share our vision based on that understanding and to engage our community in conversation about where that vision will lead.

At the center of that vision is a simple belief: talent matters, and opportunity matters, but neither is enough on its own. Young musicians must also develop the capacity to navigate challenges, make decisions, and take ownership of their growth. This understanding shapes Equity Arc's work going forward.

The convening provided an opportunity to explore these ideas with students, alumni, educators, administrators, families, and professional musicians from across the country. Keynote speakers Gabriela Lena Frank and Bryan Stevenson offered powerful reflections on the experiences that shape a person's path. Gabriela spoke about the mentors who recognized her potential before she could fully recognize it herself. Bryan reflected on the importance of proximity, the power of hope, and the responsibility to engage directly with difficult experiences. Their remarks challenged attendees to think deeply about what helps people grow and what makes lasting progress possible.

What made the convening truly meaningful was not the discussion of ideas alone. It was the opportunity to gather with the young musicians at the heart of this work. We heard students speak with honesty and conviction about their aspirations for the future. We watched alumni return as leaders and mentors. We shared in the pride of parents who have supported their children through years of dedication and sacrifice. We experienced the inspiration that comes from witnessing a generation of talented young musicians finding their voices, both on stage and beyond it.

As Equity Arc enters its next chapter, we do so with a greater sense of clarity about the work ahead. We also do so at a moment when the challenges facing young musicians and the institutions that support them remain significant. Even so, we have never been more excited about the possibilities before us. The conversations documented in this report reflect an organization that is continuing to evolve, a community that remains deeply invested in the future of its young people, and a vision that we believe will have a lasting impact on the field.

We are excited to share this report at an important moment in Equity Arc's evolution. We hope the pages that follow provide a meaningful glimpse into the conversations that took place during the convening and the vision that continues to guide our work.

With deep gratitude,



Stanford Thompson
Executive Director
Equity Arc

Equity Arc Festival Ensembles

The 2026 Festival Ensembles brought together more than 100 musicians from approximately 80 communities across 16 states and Washington, D.C., representing a growing national network of young artists pursuing classical music at the highest levels. Selected through a competitive national audition process, fellows earned their place through demonstrated musical achievement.

Selection to the Festival Ensembles has become a meaningful milestone for many young musicians, recognizing artistic accomplishment while providing an opportunity to perform alongside highly accomplished peers from across the country.

“Equity Arc was one of the most touching events of my life because it reaffirmed the why I choose every day to continue my journey as a cellist. This is because of the high-level of playing and the appreciation of diversity in this environment. It allowed me to get in touch with my goal of bringing high-level musical ability to all parts of the world.”

—Kevin Soto, cello



The weekend was built around high expectations. Fellows participated in an intensive rehearsal and performance schedule, worked closely with professional musicians, and engaged in an environment that emphasized both excellence and collaboration. The residency challenged musicians to grow not only as performers, but also as members of a broader artistic community.

Equally important was the opportunity to build relationships. Fellows reconnected with friends from summer festivals, met new peers from across the country, and expanded networks that will continue to influence their educational and professional journeys.

This year's festival marked the first time the Pathways Orchestra and Wind Symphony were in residence together throughout the weekend. Bringing both ensembles together expanded opportunities for connection among musicians from different educational pathways while strengthening Equity Arc's growing national network.



“Music, for me, was first a grueling act of discipline, and years later something I could love and express myself through. Equity Arc truly affirmed that love, and I found it in many of the extremely talented musicians I got to spend time with. After hearing fellow and faculty experiences, I left extremely motivated to further commit myself to music.”

—Solèy Toussaint, bass

The residency also highlighted the strength of Equity Arc's alumni community and the developmental continuum that has emerged across the organization's programs. Returning fellows participated as leaders and role models, offering perspectives drawn from their own experiences navigating summer study programs, conservatories, universities, and the early stages of professional careers.

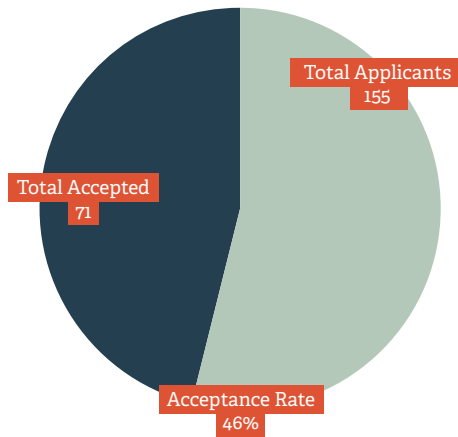
This year, we had the unique opportunity to bring our fellows to the Supreme Court of the United States, where they had a private audience with Justice Sonia Sotomayor. The visit reinforced a broader theme reflected throughout the weekend: young musicians are developing not only as artists, but also as leaders capable of contributing to their communities and the field more broadly.



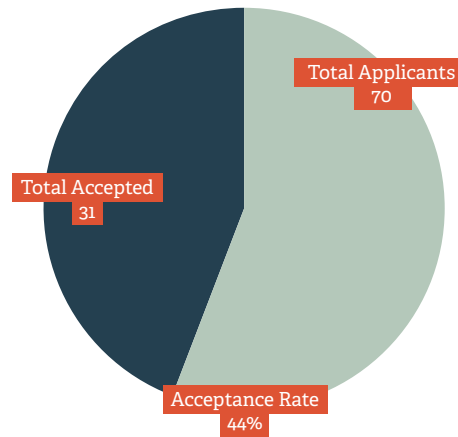
Equity Arc Festival Ensembles by the Numbers

Festival Ensemble Acceptance Rate

Pathways Orchestra



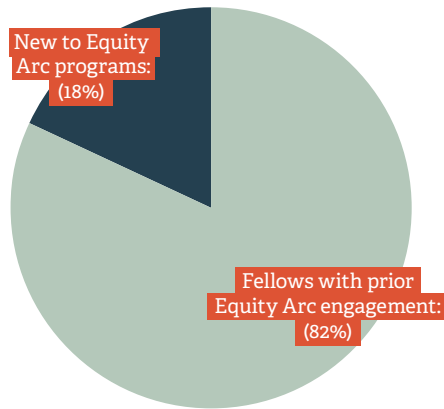
Wind Symphony



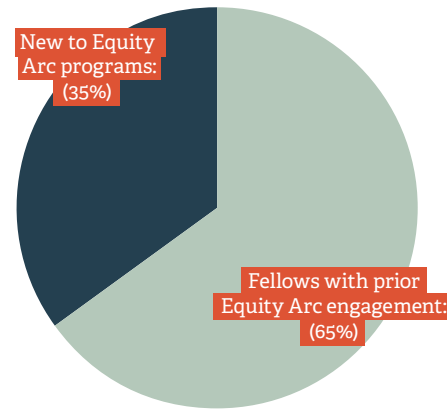
Festival Ensembles Demographics & Geography

Fellow Engagement

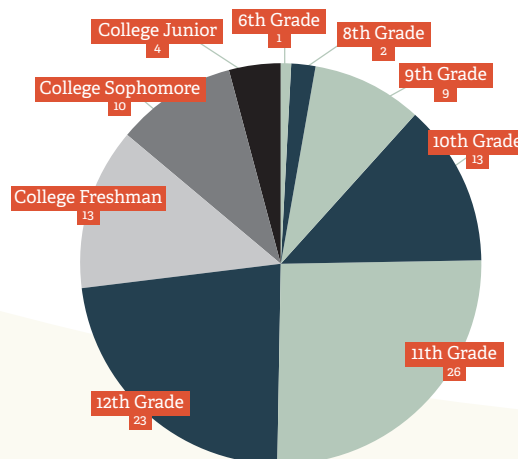
Pathways Orchestra



Wind Symphony

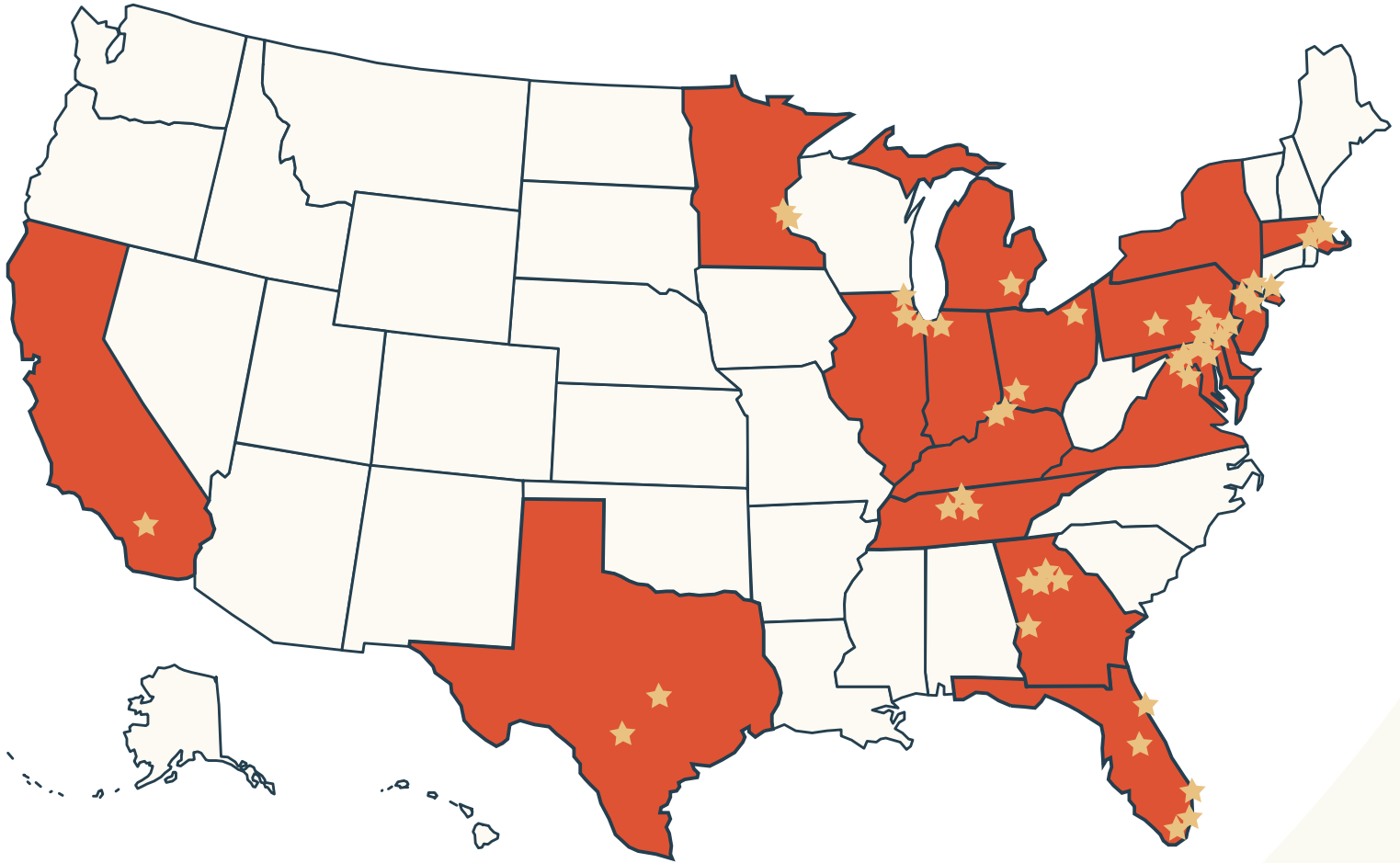


Grade Level



Ensemble Geography

The talented fellows in the Pathways Orchestra and Wind Symphony represent 81 cities from 18 states across the country.



CA	<ul style="list-style-type: none"> • Marietta • Milton • Peachtree City • Stonecrest • Suwanee 	KY	<ul style="list-style-type: none"> • Crestwood • Walton • Villa Hills 	MN	<ul style="list-style-type: none"> • Minneapolis • Rosemount • Saint Paul 	NY	<ul style="list-style-type: none"> • Great Neck • Levittown • New York 	TN	<ul style="list-style-type: none"> • Lebanon • Portland • Smyrna 						
DE	<ul style="list-style-type: none"> • Hockessin • Wilmington 	IL	<ul style="list-style-type: none"> • Chicago • Elgin • Hoffman Estates • Park Forest • Skokie • Waukegan • Wilmette • Wood Dale 	MA	<ul style="list-style-type: none"> • Andover • Arlington • Boston • Holden • Cambridge • North Attleborough • Quincy • Wellesley 	MD	<ul style="list-style-type: none"> • Baltimore • Bethesda • Ellicott City • Highland • Laurel • Potomac • Rockville • Towson • Waldorf • Wellesley 	OH	<ul style="list-style-type: none"> • Blue Ash • Cincinnati • Pepper Pike 	TX	<ul style="list-style-type: none"> • Austin • San Antonio 				
FL	<ul style="list-style-type: none"> • Delray Beach • Doral • Homestead • Miami • Orlando • Riviera Beach • St. Augustine 	GA	<ul style="list-style-type: none"> • Athens • Atlanta • Buford • Columbus • Decatur 	IN	<ul style="list-style-type: none"> • Crown Point • Munster 	MI	<ul style="list-style-type: none"> • Ann Arbor 	PA	<ul style="list-style-type: none"> • Ardmore • Chalfont • Coatesville • Doylestown • Fountain Hill • Landsdale • Marcus Hook • Philadelphia • State College • Wyndmoor • Wynnwood 	VA	<ul style="list-style-type: none"> • Ashburn • Burke 				
GA	<ul style="list-style-type: none"> • Athens • Atlanta • Buford • Columbus • Decatur 	IN	<ul style="list-style-type: none"> • Crown Point • Munster 	MI	<ul style="list-style-type: none"> • Ann Arbor 	NJ	<ul style="list-style-type: none"> • Maplewood • Rockaway 	NY	<ul style="list-style-type: none"> • Great Neck • Levittown • New York 	OH	<ul style="list-style-type: none"> • Blue Ash • Cincinnati • Pepper Pike 	PA	<ul style="list-style-type: none"> • Ardmore • Chalfont • Coatesville • Doylestown • Fountain Hill • Landsdale • Marcus Hook • Philadelphia • State College • Wyndmoor • Wynnwood 	TN	<ul style="list-style-type: none"> • Lebanon • Portland • Smyrna

Faculty

A key development in 2026 was the growth of Equity Arc's faculty model. In addition to supporting the musical preparation of the ensembles, they were intentionally selected for their ability to help fellows navigate educational and professional pathways.

Representing a wide range of experiences across the field, faculty brought perspectives on collegiate training, professional performance careers, and the many pathways musicians take through the profession. Their role extended beyond rehearsals and performances, creating opportunities for fellows to engage with experienced musicians as both educators and mentors.

Throughout the weekend, fellows actively sought opportunities to engage with faculty in conversation, asking questions about educational choices, career pathways, professional expectations, and the challenges musicians encounter along the way. These conversations were a deliberate component of the residency experience, reflecting Equity Arc's commitment to connecting young musicians with professionals who can provide both musical mentorship and broader guidance.

The residency included dedicated opportunities for faculty and fellows to discuss aspects of a musical career that are often learned through experience, including auditions, career planning, and the transition into collegiate and professional environments.

The presence of both faculty and alumni expanded opportunities for fellows to learn from musicians at different stages of their careers. Fellows were able to engage with professional musicians and near-peer role models at different stages of their careers, providing visibility into multiple pathways and helping make future possibilities more tangible.



"Good mentorship goes beyond the fundamental nuts-and-bolts of music making."

—Equity Arc Faculty Member



Faculty by the Numbers



"I find young talent incredibly inspiring, both as a teacher and a performer. All the work that it has taken for these students to reach this point in their mastery of music is an incredible launching pad for mentorship."

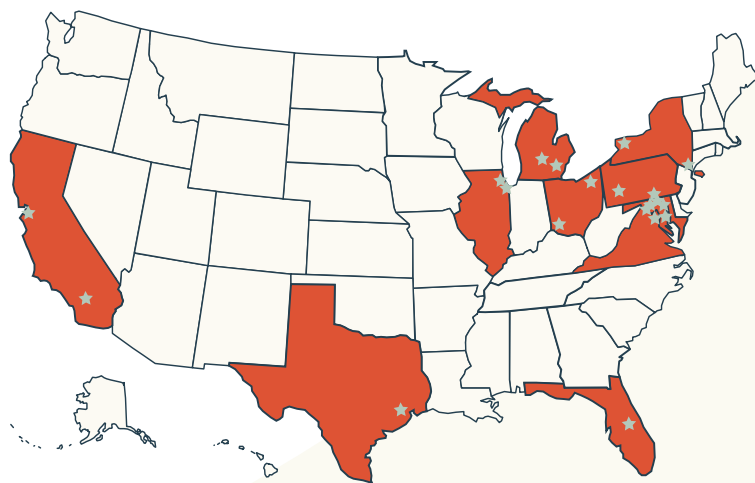
—Yolanda Kondonassis, Equity Arc Pathways Orchestra Harp Faculty

"Hearing from the faculty about their life experiences, hardships they've overcome, and how to navigate the music world was extremely helpful as I often find myself questioning what choices or actions I should take as I get closer to diving deeper into the music world through college and jobs."

—Aki Santibanez

Faculty Geography

The faculty for the Pathways Orchestra and Wind Symphony represent 23 cities from 11 states across the country.



CA

- La Crescenta
- San Francisco

DC

- Washington, DC

FL

- Kissimmee

IL

- Chicago
- Lake Forest

MD

- Baltimore
- Bethesda
- Columbia
- Olney

- Severn
- Waldorf

MI

- Huntington Woods
- Okemos

NY

- New York
- Rochester

OH

- Beachwood
- Cincinnati

PA

- Pittsburgh
- York

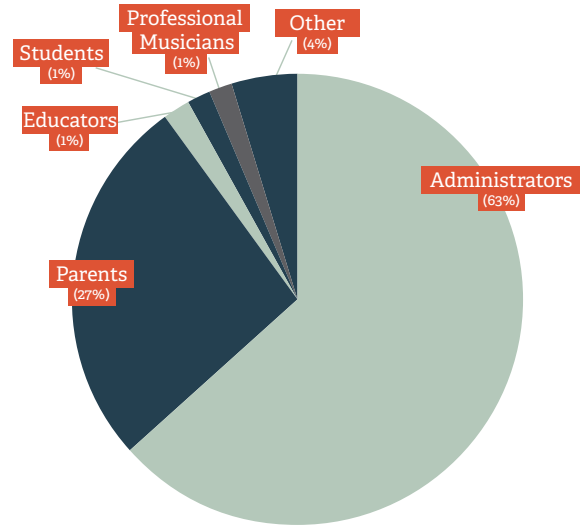
TX

- Houston

VA

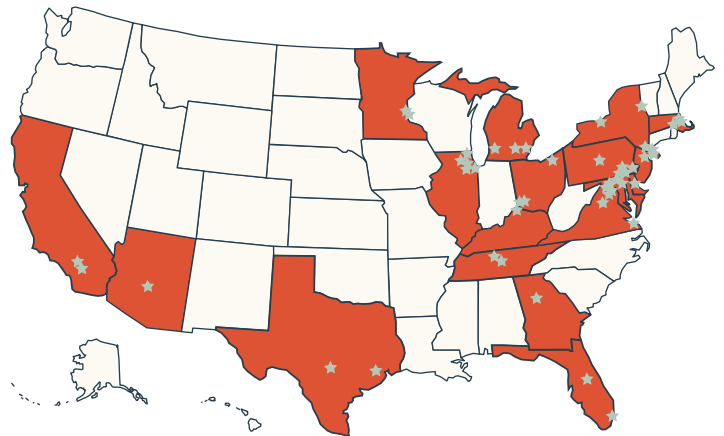
- Arlington

Convening Attendees



Convening Attendee Geography

The administrators, parents, educators, musicians, students, and supporters who attended the National Convening represent 60 cities from 20 states across the country.



AZ	GA	• Cambridge	MI	• Rochester	TX
• Phoenix	• Atlanta	• Concord	• Ann Arbor	• Westport	• Houston
CA	IL	• Newton	• Detroit	OH	• San Antonio
• Glendale	• Chicago	• Highlands	• Kalamazoo	• Blue Ash	Washington, D.C.
• Los Angeles	• Elgin	• Wenham	MN	• Cincinnati	VA
CT	• Forest Park	MD	• Rosemount	• Cleveland	• Burke
• Weston	• Highland Park	• Baltimore	• Saint Paul	PA	• Crozet
DE	• Hoffman Estates	• Bethesda	NJ	• Aldan	• Fairfax Station
• Newark	KY	• College Park	• Hillside	• Coatesville	• Virginia Beach
• Wilmington	• Villa Hills	• Ellicott City	• Montclair	• Doylestown	
FL	MA	• Fulton	NY	• Philadelphia	
• Miami	• Arlington	• Gaithersburg	• Brooklyn	• State College	
• Miami Beach	• Boston	• Rockville	• Levittown	TN	
• Orlando		• Severn	• New York	• Nashville	
			• Penfield	• Sewanee	

Keynote Speakers



OPENING KEYNOTE SPEAKER

Gabriela Lena Frank

Recently inducted into the American Academy of Arts and Letters and included in the Washington Post's list of the most significant women composers in history, identity has always been at the center of composer/pianist Gabriela Lena Frank's music. Born in Berkeley, California, to a mother of indigenous Peruvian/Chinese ancestry and a father of Lithuanian/Jewish descent, Gabriela explores her multicultural heritage through her compositions. Inspired by the works of Bela Bartók and Alberto Ginastera, Gabriela has traveled extensively throughout South America in creative exploration. Her music often reflects

not only her own personal experience as a multi-racial Latina and diaspora daughter, but also refract her studies of Latin American cultures, incorporating poetry, mythology, and native musical styles into a western classical framework that is uniquely her own.

Gabriela founded the award-winning Gabriela Lena Frank Creative Academy of Music. A two-time recipient of the Mellon Foundation's three-year grant for \$600,000, Gabriela has personally mentored nearly a hundred emerging composers at GLFCAM to date, many of whom are significant artists today, and reached hundreds of other music students in GLFCAM's Distance Learning Program. Gabriela won the 2026 Pulitzer Prize in Music and was named the 2026 Composer of the Year by Musical America.



CLOSING KEYNOTE SPEAKER

Bryan Stevenson

Bryan Stevenson is the founder and Executive Director of the Equal Justice Initiative, a human rights organization in Montgomery, Alabama. Under his leadership, EJI has won major legal challenges eliminating excessive and unfair sentencing, exonerating innocent death row prisoners, confronting abuse of the incarcerated and the mentally ill, and aiding children prosecuted as adults.

Mr. Stevenson has argued and won multiple cases at the United States Supreme Court, including a 2019 ruling protecting condemned prisoners who suffer from dementia and a landmark 2012 ruling that banned mandatory life-imprisonment-without-parole sentences for all children 17 or younger. Mr. Stevenson and his staff have won reversals, relief, or release from prison for over 140 wrongly condemned prisoners on death row and won relief for hundreds of others wrongly convicted or unfairly sentenced.



From Talent to Tenacity

The convening featured *From Talent to Tenacity*, a panel of Equity Arc interns who shared their experiences navigating educational and professional pathways in music. The session created an opportunity for fellows, families, faculty, and institutional partners to hear directly from young musicians who have recently faced many of the same decisions and challenges confronting their younger peers.

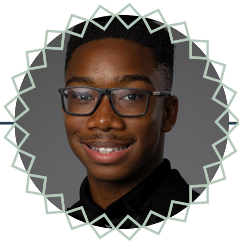


Panelists spoke candidly about mentorship, rejection, confidence, and the realities of pursuing long-term goals in music. Several reflected on the limitations of defining success through talent alone, emphasizing the importance of persistence, adaptability, and a willingness to continue growing through challenges and setbacks. Their experiences illustrated that progress is rarely linear and that development often requires sustained effort over time.

The near-peer perspective gave fellows an opportunity to hear from musicians who had recently navigated many of the same transitions they are preparing to face themselves. The interns also facilitated a fellow discussion on mentorship and musician development, creating opportunities for peer-to-peer reflection and conversation. The panel built upon those discussions, allowing attendees to hear how the panelists had navigated many of these same questions in their own educational and professional journeys. By sharing both successes and setbacks, they helped make future pathways feel more visible and approachable while reinforcing that challenges and uncertainty are common parts of a musician's development rather than signs that a student does not belong.



The session was an important opportunity for convening attendees to hear directly from the musicians at the center of Equity Arc's work. Their reflections helped ground many of the weekend's discussions in lived experience, offering insight into how young musicians navigate challenges and growth opportunities throughout their journeys.



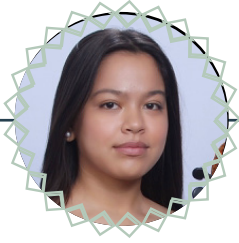
**Ugochukwu
Nwakanma**
Facilitator



Seth Corlew



Mark Li



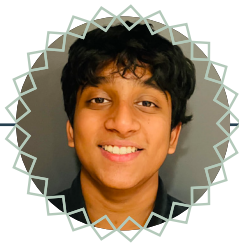
Jane Morrison



Sean Mouzon



Katelyn Nguyen



Dhiren Sivapala



Danae Truxler



College and Summer Study Fair

The ensemble residency includes a college and summer study fair designed to help fellows and their families better understand the educational opportunities available to young musicians. By connecting directly with representatives from colleges, conservatories, and summer music programs, students are able to explore opportunities, ask questions, and develop a clearer understanding of the options available to them. At the same time, participating institutions have the opportunity to engage with a talented and highly motivated group of young musicians, strengthening connections between fellows and the broader educational ecosystem.

Equity Arc is intentional about the institutions represented, seeking to include programs that reflect opportunities our students have successfully pursued. Many participating institutions are home to Equity Arc alumni, creating opportunities for current fellows to engage directly with schools and programs where former participants have continued their musical development.



Parent Engagement

Parents as Partners in Development

Parents are often the most consistent source of support throughout a musician's journey. They help students navigate setbacks, celebrate achievements, manage transitions, sustain motivation, and make decisions about educational and professional opportunities. From lessons and auditions to college applications and career planning, families frequently serve as guides, advocates, and sources of encouragement during some of the most formative stages of a musician's development.

Parents were active participants throughout the convening and contributed valuable perspectives during both breakout discussions and a dedicated parent session. Their insights reinforced themes that surfaced across many conversations about the importance of family engagement in a young musician's development and success.

Across discussions, parents emphasized their commitment to supporting their children's aspirations and their desire for greater clarity around the educational and professional pathways available to young musicians. Parents frequently discussed the importance of understanding how educational and professional decisions connect to long-term opportunity, expressing a desire for clearer guidance, stronger networks, and greater visibility into educational and career pathways that can help students navigate unfamiliar systems and translate musical talent into sustainable professional opportunities. Many described the challenge of navigating a field that often differs significantly from the career experiences they have personally encountered. Conversations explored topics such as college preparation, portfolio and freelance careers, financial sustainability, networking, professional opportunities, and the realities of building a career in music over time.



Parents also highlighted the importance of understanding how best to support students as they develop increasing independence. Discussions explored how families can help young musicians build confidence, advocate for themselves, make informed decisions, and prepare for the practical realities of college and professional life. Participants emphasized that success in music requires more than artistic excellence alone, pointing to the importance of communication skills, financial literacy, professional networks, mental health awareness, and other capacities that support long-term growth.

A particularly strong theme centered on the value of connection and shared experience. Parents expressed appreciation for opportunities to engage with one another, discuss common challenges, and learn from families whose children have progressed through similar stages of development. Facilitators observed that conversations became increasingly engaged and solution-oriented as parents exchanged ideas, resources, and practical strategies. Participants frequently identified peer learning, access to lived experiences, and opportunities to hear from working musicians and alumni families as meaningful ways to strengthen their ability to support their children.



These themes echoed perspectives shared by parents throughout the broader convening, where conversations frequently returned to the importance of mentorship, community, access to information, and navigating unfamiliar systems. Collectively, parent contributions underscored the idea that musician development occurs within a broader ecosystem of support. Equipping families with knowledge, relationships, and opportunities for connection strengthens parents' ability to support their children and enhances the developmental environment surrounding aspiring musicians. The themes emerging from these conversations offer valuable insight into how Equity Arc can further strengthen that ecosystem through support for students and families navigating educational transitions, career exploration, and long-term professional development.

“Having an institution like Equity Arc backing the process needed for each child to excel in the music industry from a young age, as opposed to luck in finding a good program, teacher and administrators, is compelling.”

—Ensemble Parent

Breakout Conversations

Breakout conversations were a central component of the convening, bringing together students, families, faculty, institutional leaders, program administrators, and professional musicians to engage with Equity Arc's Arc to Success framework.

The framework reflects Equity Arc's evolving understanding of the capacities that help musicians navigate educational and professional pathways. These include capacities such as self-advocacy and decision-making that often receive less explicit attention within traditional training environments. Through a series of facilitated discussions, participants engaged with the framework's core domains, reflected on how these capacities emerge throughout a musician's journey, and considered the role they play in long-term success. Additional conversations focused on mentorship, institutional engagement, transition points, and the structures that shape access to opportunity within classical music.

Across these discussions, participants engaged with the framework through the lens of their own experiences, offering additional context for how these capacities influence musician development in practice.

Technical Excellence and Personal Development Are Interconnected

Conversations focused less on whether these capacities matter and more on how they develop, when they become most important, and how they interact over time.

A central tension emerged in the discussions: the capacities that shape long-term success are not always the capacities that receive the most attention during training. While technical development remains the foundation of musical instruction, participants connected the Arc to Success framework to experiences they had observed across educational and professional pathways. Navigating transitions, responding to setbacks, making informed decisions, and adapting to new environments were discussed as consequential moments that can influence a musician's trajectory.

The framework provided language for experiences many participants already recognized. It created space to discuss dimensions of musician development that are often difficult to address through technical instruction alone.



Relationships Help Musicians Navigate the Pathway

As participants considered how these capacities develop over time, discussions turned to the role of relationships.

Participants reflected on the complexity of navigating educational and professional pathways, from summer study and college admissions to auditions, networking, and career planning. Accessing opportunities is only part of the challenge. Understanding how opportunities connect to one another and how they inform decision-making often requires guidance from people who have navigated similar experiences.



Mentorship was a recurring topic throughout the convening. Participants explored the ways mentors provide perspective, context, and support as musicians navigate educational and professional decisions. While teachers help musicians develop their craft, mentors help them interpret opportunities, navigate transitions, and better understand the pathways ahead.

The conversations highlighted the role of community in making future possibilities visible. Relationships with peers, alumni, faculty, and professional musicians provide encouragement, expand networks, and help young artists see examples of what is possible.

Transition Points Create Critical Moments for Support

The importance of these capacities became particularly visible in discussions about transition points, especially the move from high school to college.

Participants reflected on the challenges associated with entering new environments, adapting to increased independence, and navigating unfamiliar expectations. These transitions often require musicians to draw on the same capacities discussed throughout the framework.



The conversations highlighted the importance of preparing musicians not only for auditions and performances, but also for the transitions that shape their long-term development. While these moments often introduce uncertainty, they also serve as important inflection points, shaping how musicians adapt to new environments and respond to increasing responsibility.

Implications for Equity Arc

The breakout conversations demonstrated that the Arc to Success framework resonates across stakeholder groups and provides a useful lens for understanding musician development. Participants engaged with the framework from different perspectives while finding common ground in the experiences and challenges it describes.

The conversations also illuminated the ways Equity Arc's existing programs already contribute to this work. Themes discussed throughout the convening have long been embedded within the organization's approach. The Arc to Success framework provides a clearer articulation of how these experiences contribute to musician development and how they connect to one another.

As Equity Arc continues refining its approach, the insights and conversations documented throughout this report will inform the organization's ongoing efforts to support musician development and contribute to a stronger, more equitable future for classical music.



Equity Arc Festival Ensembles Music Directors

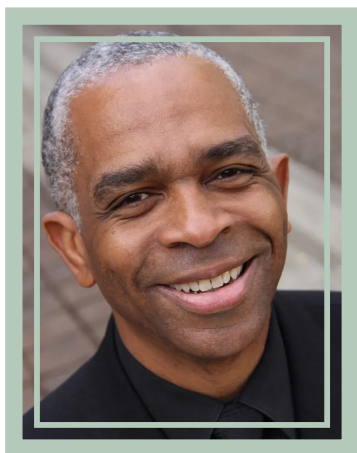


Lina González-Granados

Praised for her “rich, heartfelt orchestral sound” (*Chicago Sun-Times*), “rhythmic vitality” (*San Francisco Chronicle*) and “raw power” (*LA Times*), Colombian American conductor Lina González-Granados has distinguished herself nationally and internationally as a singular talent. Her spectacular interpretations of the symphonic and operatic repertoire, as well as her dedication to highlighting new and unknown works by Latin American composers, have earned her international recognition. Most recently, she was named one of Bloomberg Línea’s 100 Influential Latinos of 2022. She is also the recipient of the 2021

Sphinx Medal of Excellence, the Third Prize and ECHO Special Award (European Concert Hall Organization) of La Maestra Competition, and the 2020 and 2021 Solti Foundation US Career Assistance Award.

After winning the Fourth Chicago Symphony Orchestra Sir Georg Solti International Conducting Competition, Lina was named the Solti Conducting Apprentice, and served as the assistant to Maestro Riccardo Muti from February 2020 through June 2023. In the fall of 2022, she was appointed Resident Conductor by the LA Opera, a post she will hold through June 2028. She has also previously held positions as the Inaugural Conducting Fellow of the Philadelphia Orchestra, as well as the Conducting fellow of the Seattle Symphony.



Rodney Dorsey

Dr. Rodney Dorsey is Professor of Music at the Florida State University College of Music where he conducts the FSU Wind Orchestra and guides the graduate wind conducting program. Prior to joining FSU, Dorsey served on the faculties of the Indiana University Jacobs School of Music, University of Oregon, University of Michigan, DePaul University and Northwestern University.

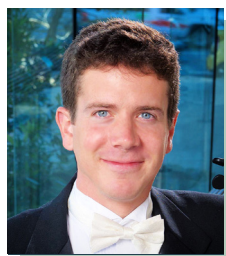
During his conducting career, Dorsey has led performances at several prominent events including the American Bandmasters Association Convention, College Band Directors National Conference North/Northwest Regional Conference, and the Bands of America National Festival. He is active as a guest conductor, clinician, and adjudicator in the United States. International engagements include Hungary, Canada, and Bulgaria.

Dorsey’s commitment to community has been demonstrated by his participation on the board of directors for Music for All and the Midwest Clinic. He currently serves as the president of the Midwest Clinic. Dorsey is also an elected member of the American Bandmasters Association. Most recently Dorsey was named a Yamaha Master Educator.

Equity Arc Pathways Orchestra Faculty



Juliana Athayde
Concertmaster,
Rochester
Philharmonic
Orchestra



Matt Young
Viola, San Francisco
Symphony



Brinton Averil Smith
Principal Cello,
Houston Symphony



Owen Lee
Principal Bass,
Cincinnati
Symphony
Orchestra



**Hannah Hammel
Maser**
Principal Flute,
Detroit Symphony
Orchestra



**Cynthia Koledo
DeAlmeida**
Principal Oboe,
Pittsburgh Symphony
Orchestra



Michael Rusinek
Principal Clarinet,
Pittsburgh Symphony
Orchestra



Joshua Elmore
Principal Bassoon,
San Francisco
Symphony



David Bilger
Professor of Trumpet,
Northwestern
University



William D. Caballero
Principal Horn,
Pittsburgh Symphony
Orchestra



Kenneth Thompkins
Trombone
Associate Professor,
Michigan State
University



Kyle Turner
Tuba, American
Symphony



Joshua Jones
Principal Percussion,
Grant Park Orchestra



Yolanda Kondonassis
Soloist and Professor of Harp
The University of Michigan

Equity Arc Wind Symphony Faculty



Sofia Hailu
Flute
Artist and Executive
Coach



Mark Christianson
Solo English Horn-
Oboe, US Marine
Band (ret.)



Jihoon Chang
Professor of Clarinet
and Saxophone,
Dickinson College



Jeremy Koch
Saxophonist,
chamber musician,
and educator



Eddie Sanders III
Bassoon,
The United States Air
Force Band (ret.)



Jennifer Marotta
Trumpet, University
of Southern
California



Joseph Lovinsky
Principal Horn,
The US Army Band
"Pershing's Own"
(ret.)



Julian Ayers
Trombone,
The United States
Army Band (ret.)



Brian Bowman
Regents Professor of
Euphonium Emeritus,
University of North
Texas



Willie Clark
Tuba, United States
Air Force "Ceremonial
Brass" (ret.)



**James Leonardo
Smith**
Bassist, United
States Air Force
Bands (ret.)



Glenn Paulson
Percussionist,
United States
Maine Band (ret.)



Julie Angelis Boehler
Principal Timpanist,
The U.S. Army Band
"Pershing's Own" (ret.)

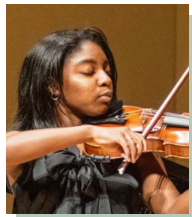
Equity Arc Festival Ensembles Rosters

Equity Arc Pathways Orchestra

Violin I



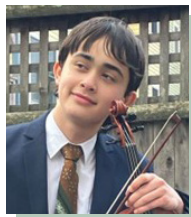
Beatrice Valenzuela
Wilmette, IL



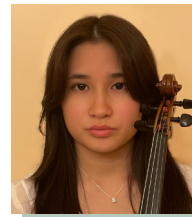
Waverly Alexander
Milton, GA



Alexander Hernandez-Williams
Holden, MA



Olivier Trevor
Cambridge, MA



Aki Santibanez
Chicago, IL



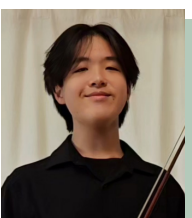
Annabelle Wei
Hockessin, DE



Ora Avila
Chalfont, PA



Julia Lancman
Blue Ash, OH



Bright Wang
Potomac, MD



Xiruo Wang
Chicago, IL

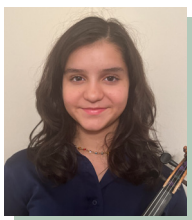


Paloma Furst Chavira
Park Forest, IL

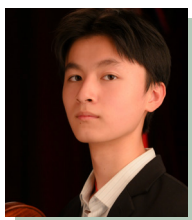
Violin II



Ayra Karlin
Homestead, FL



Carmen DeAtley-Rosales
Villa Hills, KY



Yiguo Zhang
Wynnewood, PA



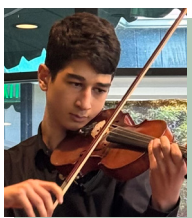
Christopher Harach
New York, NY



Danae Truxler
Coatesville, PA



George Wang
Chicago, IL



David Vardanyan
Glendale, CA



McKayla Hwang
Wilmington, DE



Michael Rodriguez
New York, NY

Viola



Israel Anselme
North
Attleborough, MA



Isaiah Rose
Wyndmoor, PA



Philip Weeks
Ashburn, VA



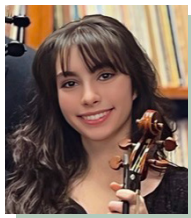
Dylan Gutierrez-Aguilar
Suwanee, GA



Jane Morrison
Burke, VA



Christina Lehmann
Walton, KY



Olivia Doolin
Munster, IN



Jaiveion Benjamin
Philadelphia, PA



Anton Wingert
Doylestown, PA



Lucas Lauprasert
Baltimore, MD

Cello



Sonya Moomaw
Cincinnati, OH



Zoie Chu
Bethesda, MD



Ishaan Banerjee
Bethesda, MD



Amaru Muhammad
Ardmore, PA



Ethan Alvarez
Miami, FL



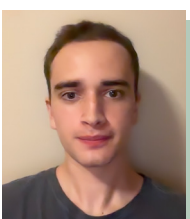
Ezrael Lukman
Wood Dale, IL



Lorenzo Ye
Boston, MA



Michal Karlin
Homestead, FL



Gui Vignon-Villani
Andover, MA



Kevin Soto
Chicago, IL

Bass



Kevin Porter
Miami, FL



Niles Scott
Maplewood, NJ



Travis Phillips
Pepper Pike, OH



Mateo Estanisla
Elgin, IL

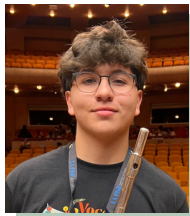


Meeka Toure
Cambridge, MA



Elliot Kerman
Arlington, MA

Piccolo



Angel Reverol
Smyrna, TN

Flute



Jose Luz Santos
Lebanon, TN



Jazmyn Irons
Chicago, IL

Oboe



Zachary Allen
Skokie, IL



Guadalupe Ramirez
Waukegan, IL

English Horn



Connor Welch
Towson, MD

Clarinet



Nihar Bhavsar
Riviera Beach, FL

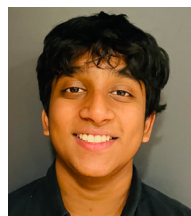


Hector Colon
Portland, TN

Bassoon



Chloe Robertson
Rockville, MD



Dhiren Sivapala
Wellesley, MA

Trumpet



Solanite Ketema
Rosemount, MN



Ivan Calderon
Hoffman Estates, IL

Horn



Jackson Jeffrey
Decatur, GA



Austin Adaranijo
Laurel, MD



Sean Mouzon
Stonecrest, GA



Guilherme Cooper
Delray Beach, FL

Trombone



Ugochukwu Nwakanma
Milton, GA



Gabriel Silva
Buford, GA

Bass Trombone



Ezequiel Sanchez
Boston, MA

Tuba

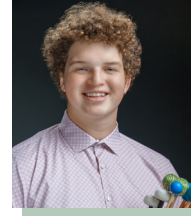


Alias Asse
Miami, FL

Percussion



Sydney Vance
Philadelphia, PA

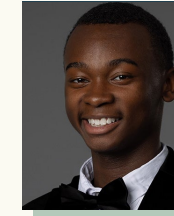


Elijah Kovar
Fountain Hill, PA



Collyn Wilcher
Waldorf, MD

Harp



Myron Leonard
Atlanta, GA

Equity Arc Wind Symphony

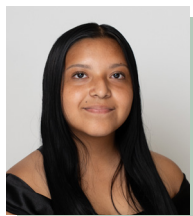
Flute



Kaylee Johnson
Chicago, IL



Fabian Coronado-Rivera
Doral, FL



Delia Mendoza
Chicago, IL



Rishi Bhattacharyya
State College, PA

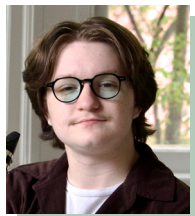


Israel Perales
San Antonio, TX

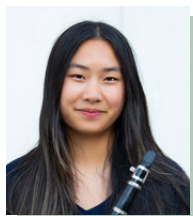
Clarinet



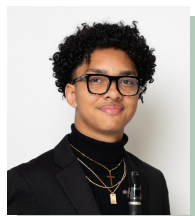
Katelyn Nguyen
Austin, TX



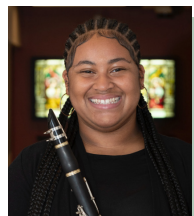
Nova Davis
Columbus, GA



Eleanor Love
Peachtree City, GA



Caliel Mosley
Crown Point, IN



Zakyya McClenny
Marcus Hook, PA

Bassoon



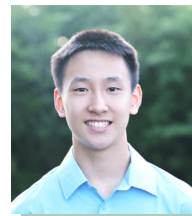
Emily Perez-Ojeda
Chicago, IL



Evelyn Moren
Minneapolis, MN



Ramiya Sivapala
Wellesley, MA



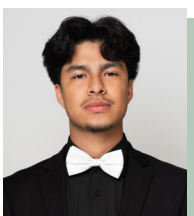
Mark Li
Ellicott City, MD



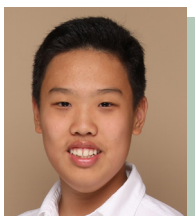
Manya Das
Marietta, GA

Alto Saxophone

Trumpet



Saul Cirilo
Chicago, IL



Jun Suh Lee
Ann Arbor, MI



Robert Randolph
Philadelphia, PA



Tabor Negash
Philadelphia, PA

Horn



Seth Corlew
St. Augustine, FL



Emily Dubbs
Highland, MD



Vanessa Cabrera
Rockaway, NJ

Trombone



Thomas Pajares
Athens, GA



Alexander Baluyut
Great Neck, NY

Euphonium Tuba



Sullivan Tucker
Crestwood, KY

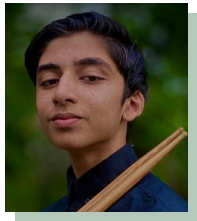


Luke Fu
Bethesda, MD

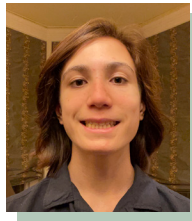


Solèy Toussaint
Boston, MA

Bass



Omar Khan
Orlando, FL



Caleb Colton
Saint Paul, MN



Ehloany Negrón
Levittown, NY



Kenneth Felton III
Landsdale, PA

Percussion



Senior Update

This year's graduating seniors represent the next generation of artists and leaders in the field. Their achievements reflect not only individual talent and dedication, but also the support of families, teachers, mentors, and peers who have been part of their journeys. We congratulate these musicians on all they have accomplished and look forward to the paths they will continue to forge in the years ahead.

Fellows were accepted to 61 colleges and conservatories across the country totaled over \$10M in scholarship offers from four-year institutions.

They were admitted to the following schools:

- Bard College
- Baylor University
- Berklee School of Music
- Boston Conservatory at Berklee
- Boston University (3)
- Carnegie Mellon University (5)
- Case Western Reserve University
- Clarke Atlanta University
- Columbus State University
- DePaul University (3)
- Duke University
- Eastman School of Music (4)
- Emory University
- Fisk University
- Florida State University
- George Mason University
- Georgia State University
- Indiana University (6)
- Jackson State University
- Long Island University
- Louisiana State University
- Lynn University
- Manhattan School of Music (4)
- Mannes School of Music
- McGill University
- Mercer University
- Michigan State University (2)
- North Carolina Agricultural and Technical State University
- Northwestern University (2)
- Oberlin Conservatory (2)
- Peabody Institute (5)
- Princeton University
- Roosevelt University (2)
- Royal College of Music
- Rutgers University (2)
- Southern University
- Stetson University
- SUNY Potsdam
- Swarthmore College
- Syracuse University
- Talladega College
- Temple University (6)
- Texas A&M University-Corpus Christi
- Texas Christian University
- The Ohio State University
- The Pennsylvania State University (3)
- University of Cincinnati (2)
- University of Delaware (2)
- University of Georgia
- University of Illinois Urbana-Champaign (3)
- University of Miami (3)
- University of Michigan (7)
- University of North Carolina School of the Arts
- University of Tennessee
- University of Texas at El Paso
- University of Wisconsin-Madison
- Valdosta State University
- Vanderbilt University (3)
- West Chester University (2)
- Widner University
- Wilberforce University





Alexander Baluyut

Great Neck, NY

Next Step: University of Michigan
Major: Trombone Performance

"My participation in the Equity Arc Festival Ensembles was eye-opening and inspiring. Hearing everyone's stories reminded me of the life-changing impacts that music has had on all of us, and of the importance of proper and accessible mentorship."



Danae Truxler

Coatesville, PA

Next Step: Eastman School of Music
Major: Violin Performance

"Being a part of Equity Arc has allowed me to collaborate with musicians from all over the country with similar attitudes and love for music. The peers, friends, and mentors that I have encountered in my musical journey inspire me every day."



Elijah Kovar

Fountain Hill, PA

Next Step: Carnegie Mellon University
Major: Percussion Performance

"My participation in the Equity Arc Festival Ensembles immensely improved my confidence and musical esteem. I believe this will continue to improve my musical abilities and confidence, because it has shown me that I am capable of more."



Ayra Karlin

Homestead, FL

Next Step: Vanderbilt University
Major: Violin Performance



Ehloany Negrón

Levittown, NY

Next Step: Berklee College of Music
Major: Music Production and Engineering



Emily Perez-Ojeda

Chicago, IL

Next Step: University of Michigan
Major: Clarinet Performance





Ethan Alvarez

Miami, FL

Next Step: University of Miami
Major: Cello Performance



Israel Perales

San Antonio, TX

Next Step: North Carolina School of the Arts
Major: Oboe Performance

"Participating in Equity Arc has allowed me to meet amazing faculty and students. I learned so much information that I will take with me into college."



Meeka Toure

Cambridge, MA

Next Step: Peabody Institute
Major: Double Bass Performance



Ezrael Lukman

Wood Dale, IL

Next Step: Northwestern University
Major: Cello Performance

"Equity Arc changed and broadened my perspective on how music can change the world, and I was able to meet so many musicians from around the nation who have the same heart for music."



Jazmyn Irons

Chicago, IL

Next Step: Michigan State University
Major: Flute Performance



Myron Leonard

Atlanta, GA

Next Step: Manhattan School of Music
Major: Harp Performance

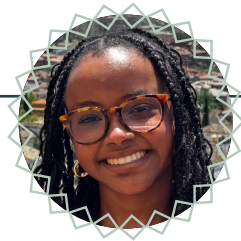


Hector Yaniel Colon Ribot

Portland, TN

Next Step: Vanderbilt University
Major: Clarinet Performance

"Participating in Equity Arc programs has guided me through my musical journey through the support, encouragement, and opportunities provided. I have learned so much from the many teachers and peers that I have been able to meet through Equity Arc."



Kaylee Johnson

Chicago, IL

Next Step: Peabody Institute
Major: Flute Performance

"Equity Arc has made me feel even more motivated and excited to pursue music because I got to experience performing with other like-minded and talented musicians who love music as much as I do."



Olivia Doolin

Munster, IL

Next Step: McDuffie Center for Strings at Mercer University
Major: Viola Performance



Rishi Bhattacharyya

State College, PA

Next Step: Penn State University
Major: Chemical Engineering



Sean Mouzon

Stonecrest, GA

Next Step: Southern University and A&M College
Major: Horn Performance

“Equity Arc has taught me to never allow myself to be put in a box or be limited by others' expectations. No matter where you come from, or where other people think or say you should go, you and you only are responsible for your future self.”



Vanessa Cabrera

Rockaway, NJ

Next Step: University of Michigan
Major: Horn Performance

“My participation in Equity Arc ensembles truly brought my spark back to music. Equity Arc ensembles have made me realize that the best way to bring change is to bring people together, and in our case, with music. Music will forever be my voice against injustice and for fighting for equality, and Equity Arc has taught me how effective it truly is.”



Robert Randolph

Philadelphia, PA

Next Step: Temple University
Major: Jazz Studies



Travis Phillips

Pepper Pike, OH

Next Step: Northwestern University
Major: Double Bass Performance and Biomedical Engineering

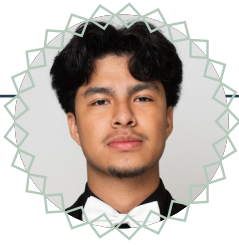
“Equity Arc has connected me with great musicians my age and older that I have been able to learn a lot from. In addition to the students, the world-class faculty is unmatched in their ability to lift us up and significantly increase our level of playing.”



Waverly Alexander

Milton, GA

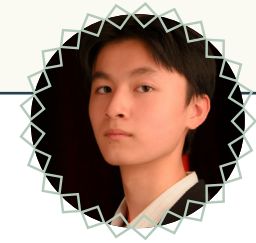
Next Step: Peabody Institute
Major: Violin Performance



Saul Cirilo

Chicago, IL

Next Step: Roosevelt University
Major: Trumpet Performance



Yiguo Zhang

Wynnewood, PA

Next Step: Princeton University
Major: Physics with a minor in Violin Performance

Equity Arc Leadership

Board of Directors

Michael Angell, Founder, Pistocelli Services

Elisabeth Babcock, *Board Vice Chair*, Consultant, Babcock Strategy

Jenn Chang, Program Director of the Culture and Civil Society Initiative, Harvard Kennedy School Center for Public Leadership

Mark Churchill, Founder, El Sistema USA

Charlie Grode, *Board Chair*, President and Executive Director, Merit School of Music

Alisa Kuno, Fractional CFO, Circle of Kin

Katherine Drago Luellen, Vice President of Enrollment Management and Chief Growth Officer, New England Conservatory

Emily Liao Master, Vice President and General Manager, Atlanta Symphony Orchestra

Maria Mathieson, Executive Director, Choral Arts Society of Washington

Robert McGrath, President & CEO, Cincinnati Symphony Orchestra

Alison Melick, *Board Treasurer*, Financial Services Risk Advising and Governance, AEM Risk Advisors LLC

David Muller, Retired Financial and Investment Professional

Ian Saunders, Artistic Director, Project STEP

Melanie Speight, *Board Secretary*, Special Employment Law Counsel, Proskauer Rose LLP

Stefanie Wakeman, Human Services Consultant

Sheila Williams, Author and Librettist

Staff

Stanford Thompson, Executive Director

Magee Capsouto, Associate Director

Mark Hunsberger, Program Director

Paige Kerrigan, Operations Manager

Production Manager

Debbie Lobel



EQUITY ARC